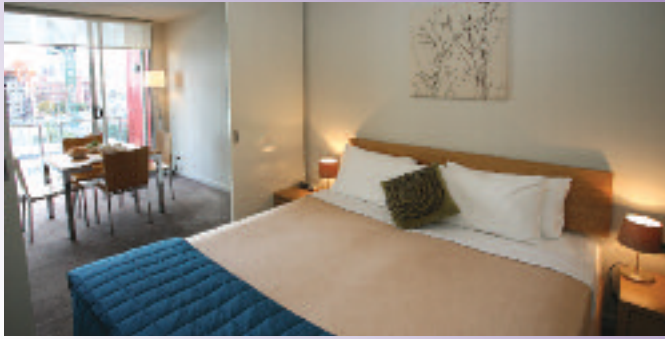
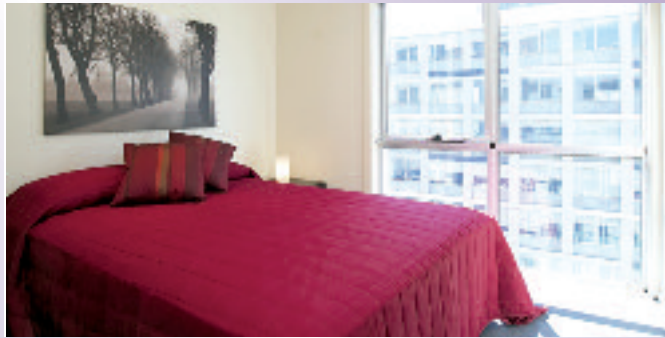


Southbank



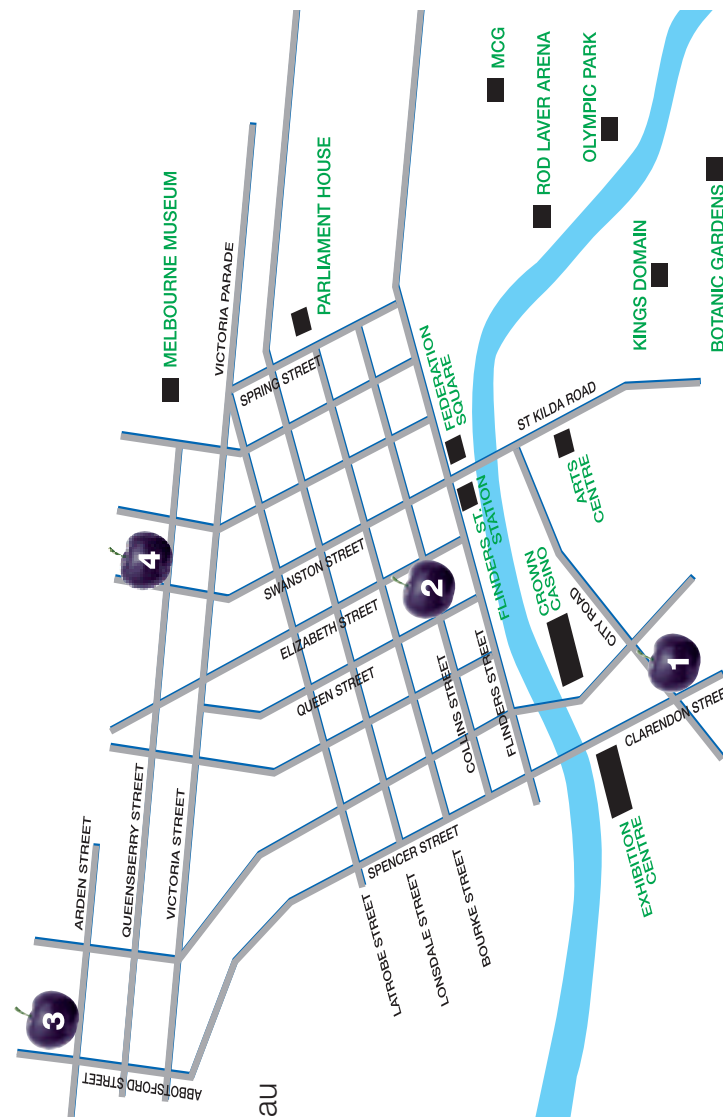
Collins Street



North Melbourne



Carlton



1300 669 629
www.plumapartments.com.au

- 1** Plum – Southbank
- 2** Plum – Collins Street
- 3** Plum – North Melbourne
- 4** Plum – Carlton

Make the most of your stay

When next in Melbourne, enjoy a Plum Serviced Apartment with more room, great value and a plum location.



Appreciate the freedom our stylish apartments offer you in four great locations. Southbank, Collins Street CBD, Carlton and North Melbourne.

A genuine home away from home for business or pleasure.



SPACE • LOCATION • STYLE • VALUE

1300 669 629

www.plumapartments.com.au

Southbank – Executive Retreat

For the busy executive looking for a serviced apartment with separate living areas including balcony in a city edge location. One bedroom (sleeps 3). Two bedroom (sleeps 5). 3 bedroom penthouse (sleeps 7). Parking available (charges apply). Close to Melbourne Exhibition Centre (0.5km), Crown Casino (0.4km), Arts Centre (1.2km), Southbank cafes/restaurants (1km), Telstra Dome (1.3km), Melbourne Airport (31.4km). ★★★★★ (self rated)

Apartments include:

- Separate bedrooms
- Full kitchen facilities
- Dishwasher & microwave
- Reverse cycle air conditioning
- TV/DVD
- Broadband internet connection
- Laundry facilities
- Secure Building Access



Collins Street – Central Shopper

Perfect for guests wishing to explore Melbourne's boutique shops and restaurants or simply relax in the comfort of your apartment's open living spaces and balcony in the heart of the city. Studio (sleeps 2). One bedroom (sleeps 3). Two bedroom (sleeps 5). Close to Federation Square (0.5km), Bourke Street Mall (0.3km), Flinders Street Station (0.3km), MCG (2.4km), Chinatown (0.6km), Melbourne Airport (27.6km). ★★★★★ (self rated)

Apartments include:

- Full kitchen facilities
- Dishwasher & microwave
- Reverse cycle air conditioning
- TV/DVD
- Internet connection
- Laundry facilities
- Majority with balcony
- Secure Building Access



North Melbourne – Longer Stays

Great for the business professional or small family staying for an extended period. Some apartments include an outdoor courtyard for extra comfort. Studio (sleeps 2). One bedroom (sleeps 3). Close to Queen Victoria Market (1.4km), Flemington Racecourse (3.2km), Royal Melbourne Showgrounds (3.3km), Melbourne Zoo (2.4km), Royal Melbourne Hospital (0.9km), Royal Children's Hospital (0.9km), North Melbourne Train Station (1km), Melbourne Airport (23.8km). ★★★★★ (self rated)

Apartments include:

- Full kitchen facilities
- Dishwasher & microwave
- Reverse cycle air conditioning
- TV/DVD
- Internet connection
- Laundry facilities
- Secure Building Access
- Tram stop at the door



Carlton – Budget Conscious Traveller

Great value serviced apartments for family and friends. Enjoy more space with communal BBQ courtyard, entertainment lounge and in close proximity to Melbourne CBD. Studio (sleeps 2). One bedroom (sleeps 3). Close to RMIT University (0.4km), University of Melbourne (0.6km), Lygon's Street cafes & restaurants (0.3km), Melbourne Museum (0.6km), Royal Exhibition Building (0.6km), Melbourne Central Train Station (0.7km), Melbourne Airport (27km). ★★★★★ (self rated)

Apartments include:

- Kitchen facilities
- Microwave
- Reverse cycle air conditioning
- TV/DVD
- Internet connection
- Guest laundry (charges apply)
- Security Access
- Parking available (limited, charges apply)
- Tram stop at the door

